



Proud to display this symbol

Copyright Kevin Marti 2021

Thank you for your interest in our services. We have determined the following information for your vehicle from the Ford Database we have:

F36ZPHA3006133 4 1 2 06M1123 EL113 GDS 47N3 4 3 H 41J20322M 1P AA 3 1947 ZKDS 47

DOOR DATA PLATE INFORMATION

Serial Number **F36ZPHA3006**

F36	F-350 4x4 Regular Pickup Truck
-----	--------------------------------

Z 6.6L 400-2V V-*8 Engine

P Built at Twin Cities

HA3006 Serial Number of this Ford Truck scheduled for production at Twin Cities

12/79 December, 1979

1P Medium Grey Metallic Paint, Ford #5523-A

41 Chicago DSO (District Sales Office)

133 Wheelbase (inches)

F361	F-350 4x4 Regular Pickup Truck 9100 Lb. GVW
------	---

AA4 Black Vinyl Custom Bench Seat / Styleside

K C-6 Automatic Transmission

D3 4.10 Dana Limited Slip Rear Axle

1980 Model Year

ORDER TYPE: STOCK

DSO ITEM #: 1123

DEALER #: 41J203

SEXTON FORD SALES INC

3802-16TH ST

MOLINE IL 61265

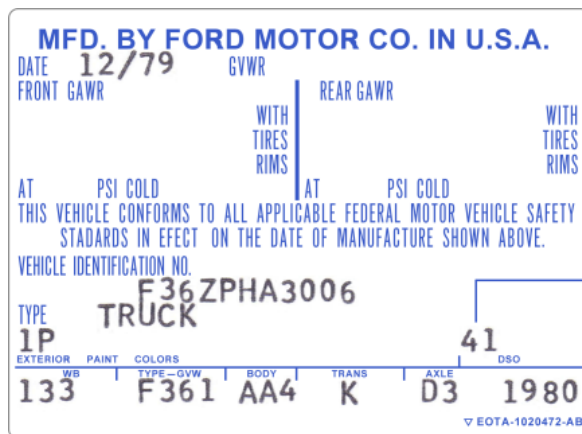
Your vehicle was equipped with the following features:

- Skid Plates
- 9.50X16.5E Black Sidewall Tires
- Mud & Snow Tread Tires
- Spare Wheel
- Bright Swing-Out Recreation Mirrors
- Snow Plow Package
- Cigar Lighter
- Painted Rear Step Bumper
- Custom Package
- Lower Bodyside Moldings

Your vehicle was actually produced on December 10, 1979 -- four days behind schedule.

Kevin Monte

Kevin Marti



IMPORTANT DATES

ORDER RECEIVED:	11/14/79
CAR SERIALIZED:	11/19/79
BUCKED:	12/06/79
SCHEDULED FOR BUILD:	12/06/79
ACTUALLY BUILT:	12/10/79
RELEASED:	12/10/79
SOLD:	06/05/80

STATISTICS

Your vehicle was one of:

290 With this Paint Code

19 With these Paint/Trim Codes

2.245 With these Engine/Transmission Codes

628 Ordered from this DSO

2,200 With Snow Plow Package

For the 1980 F-350 4x4 Regular Pickup Truck